

ATS1210E

8-16 zone DGP input expander, small plastic housing, EN50131 Grade 3 Class II

Data Gathering Panels

Data Gathering Panels (DGP) are used to expand the number of alarm inputs on the system and allow inputs and relays to be connected at a location remote from the ATS Advanced or ATS MASTER panel. DGPs communicate via poll & reply messages and send alarms to the control panel for processing. The DGPs collect information from detectors, door contacts and other similar devices. There are DGPs available for conventional devices, wireless devices as well as for intelligent addressable devices. A special DGP is also available for collecting the information for either four doors or lifts.

System databus connection

The system databus is used to connect Data Gathering Panels (to provide extra zones) and Arming Stations to the ATS Advanced or ATS MASTER control panel. Remote devices can be up to 1.5 km from an ATS control panel.

Arming stations and Data Gathering Panels must be connected via a 2 pair twisted shielded data cable from the system databus connection. (WCAT 52 is recommended). The shield of the data cable should be connected to earth at the ATS control panel and should be left disconnected at any other end.

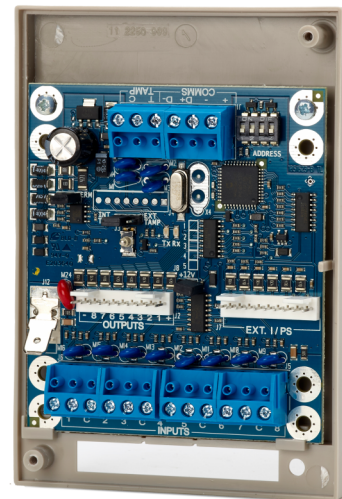
Functionality

Should a failure in communications occur, the Data Gathering Panel remembers the last alarm state for connected detectors, helping to identify possible reasons for faults.

Up to 15 DGP's can be connected directly to the Advisor Master panel and up to 8 to the ATS Advanced control panel. For every DGP expanded to more than 16 inputs, the total number of Data Gathering Panels in a system reduces by one. If a system has all its Data Gathering Panels fully expanded to 32 inputs, the physical number of Data Gathering Panels in a system becomes 8.

Product Overview

8 -16 zone & output DGP expander without PSU in small plastic enclosure, EN50131 Grade 3 & PD6662:2010. Depending on the basic capacity of the control panel up to 15 input expanders can be used at a maximum distance of 1,5km. The product is provided in the ATS1644 plastic housing.



Details

- 8 inputs on board
- Expandable to 16 inputs
- 8 OC outputs on board
- Expandable to 16 outputs
- ATS1644 Plastic enclosure with tamper protection
- EN50131 Grade 3
- PD6662:2010

ATS1210E

8-16 zone DGP input expander, small plastic housing, EN50131 Grade 3 Class II

Technical specifications

General

Expander type	Input expander
Product line	Advisor Advanced, ATS Master
Connection type	Databus connection
Max. distance from panel	1.5 km
Max. per panel	15
Specified cable	WCAT 52/54

System

Addressing	DIP Switches
------------	--------------

Inputs

Total	16
Onboard	8
Expandable	8 (1x ATS1202)

Outputs

Total	16
Onboard	8
Expandable	8
Type of outputs	Open Collector
Relays	Via ATS1810 / ATS1811
Maximum number of outputs	16

Electrical

Operating voltage	10.5 to 13.8 VDC Powered by the panel bus
Current consumption	53 mA
Integrated power supply	No

Physical

Physical dimensions	86 x 125 x 36 mm
Net weight	190 gr

Environmental

Operating temperature	-10 to +55°C
Relative humidity	< 95% non condensing
IP rating	IP30

Standards & regulation

Certification	EN50131 Grade 3
---------------	-----------------

As a company of innovation, UTC Fire & Security reserves the right to change product specifications without notice. For the latest product specifications, visit UTC Fire & Security online or contact your sales representative.

Last updated on 2 March 2020 - 9:29

